

S H  D E

Better Light – Better Living

Installation Guide  
Shade Pendant ØS1

# Important!

## Read before installation

### Installation precautions:

- Disconnect the electricity supply at the fuse box before commencing any electrical work.
- Before drilling and installing wall plugs, make sure there are no electrical cable routed in the ceiling in that spot.
- Do not install in areas with flammable gases/fumes, wet or humid areas with  $RH > 90\%$  or near open flame or over any source of heat.
- For use in ambient temperatures between 0 and 40°C.
- Do not connect luminaire directly to the mains.
- Use appropriate wall plugs and screws for the type of ceiling at installation.
- Only connect the luminaire to the power supply installed inside the canopy.
- Only one luminaire can be connected to the power supply/canopy.
- Refer to local legislation prior to any electrical work. If in doubt, contact an authorized electrician.

### Servicing & handling:

- Clean only with a damp (water) cloth, never use solvents or alcohol.
- No user serviceable parts inside.
- Contact your local distributor in case you experience problems.

**Please refer to our website for further support**  
**<https://shadelights.com/english-content/faq>**

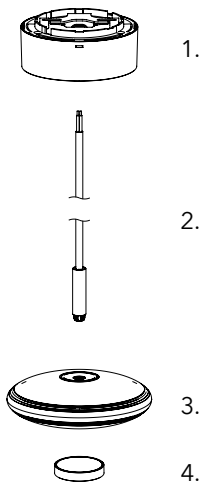
## Introduction: Shade Pendant ØS1



Congratulations with your new Shade Pendant ØS1 designed by Øivind Slaatto.

Shade is a Danish design company using cutting edge technology to change and improve the way we interact with and control light, we call it Better Light - Better Living.

We hope you will discover all the possibilities of light with your new Shade Pendant ØS1.



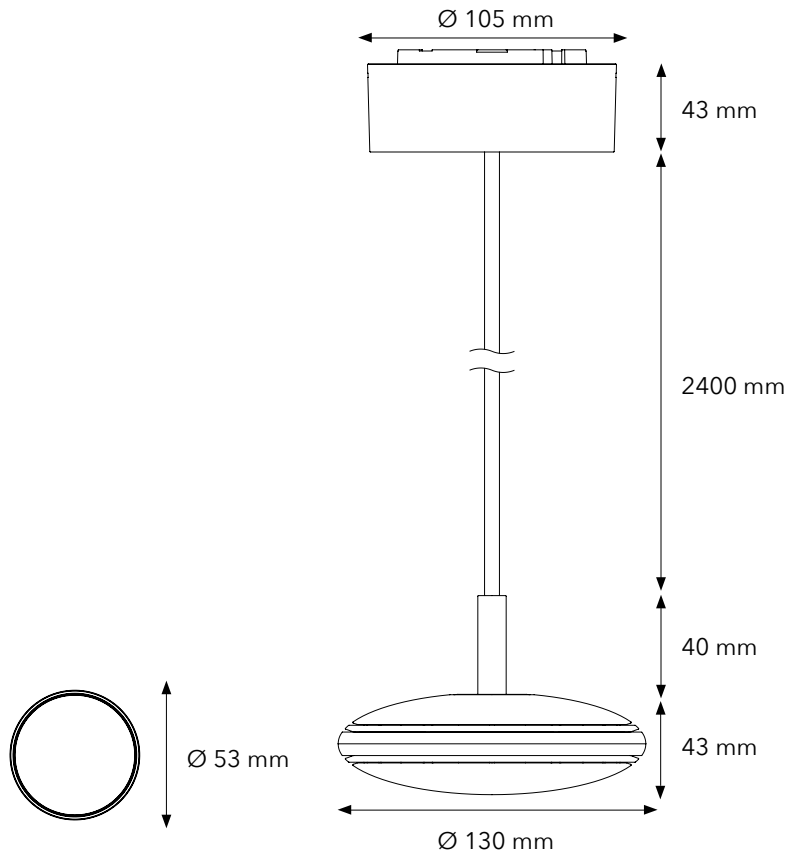
### Contents:

1. Canopy (with power supply 24V DC)
2. 2,4m luminaire cable
3. ØS1 Module (luminaire)
4. Shade Node (remote control)

### Tools needed:


- Phillips screw driver
- Small flat screw driver
- Cable cutter/stripper
- Pencil

# Dimensions: Shade Pendant ØS1

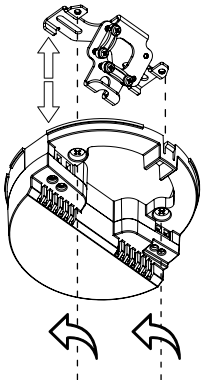


## Installation: Shade Pendant ØS1

### Step 1: Separate the bracket & power supply

**A.**  Disconnect the electricity supply at the fuse box.

**B.** Separate the metal bracket and the power supply by unscrewing the two screws. Do not remove the screws completely from the base

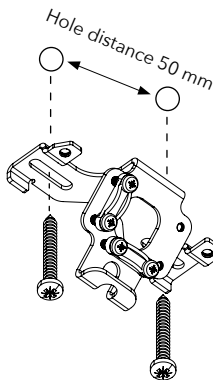


### Step 2: Mark, drill and mount the bracket

**A.** Mark the holes in the ceiling with a pencil on the desired position before drilling.

**B.** Mount the metal bracket securely with suitable mounting measures and screws, appropriate for the ceiling type.

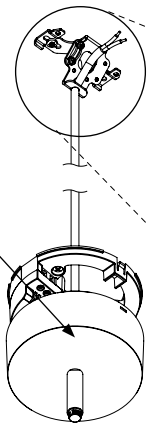
**Note:** *The bracket can also be installed on top of an electrical junction box, use appropriate screws for this.*



### Step 3: Pass the luminaire cable through the ceiling bracket.

**A.** Firstly, ensure to pass the cable through the canopy cover and through the power supply center hole.

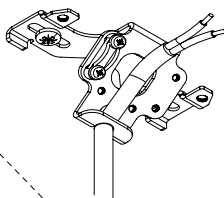
**B.** Secondly, ensure to pass the cable through the center hole in the ceiling bracket.



### Step 4: Adjust luminaire cable length and fasten

**A.** With the cable installed through the metal bracket, lock the pendant at the desired height by tightening the cable clamp.

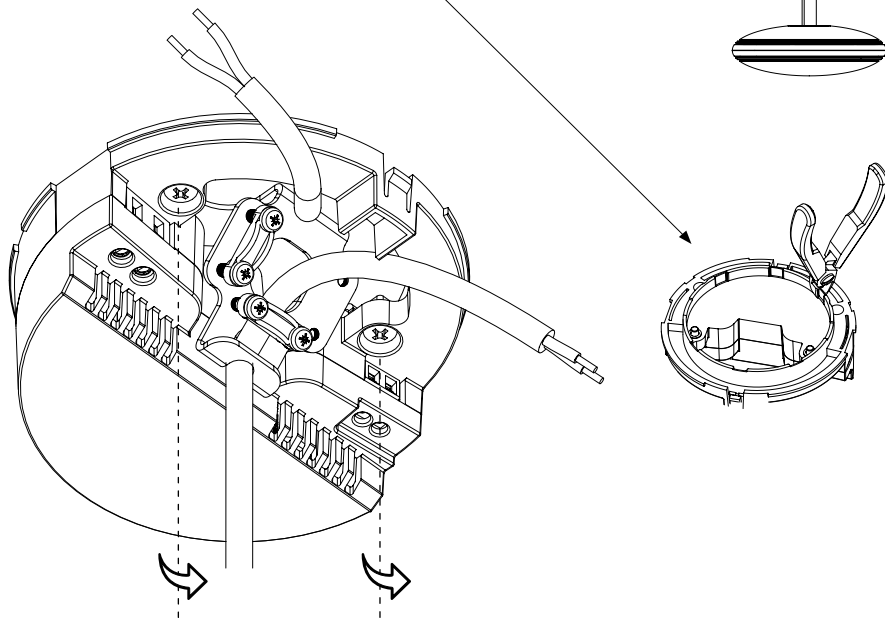
**B.** Cut the cable so that there is at least 10 cm of length after the cable clamp.



## Installation: Shade Pendant ØS1

### Step 5: Install power supply

**A.** Prior to installing the power supply onto the bracket, prepare the bottom side of the power supply for mains cable entry by cutting the appropriate slot open.

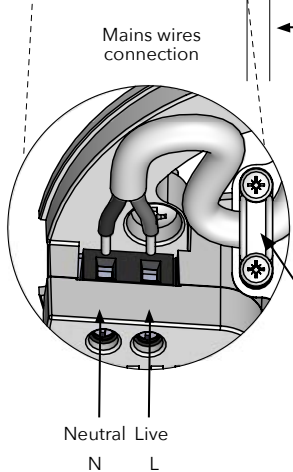
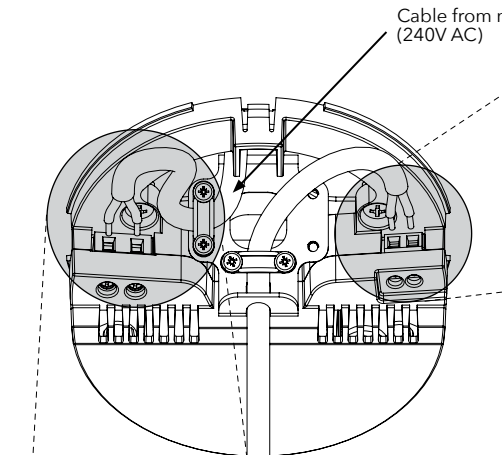


**Note:** If multiple Shade Pendant ØS1s are installed next to each other, pass the mains cable directly to the other pendant power supply. Find the small cutting zones in the plastic of the canopy base to allow this operation.

**B.** Install the power supply on the bracket by fastening the two screws.

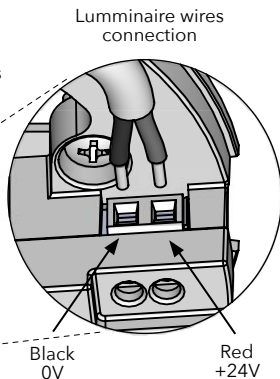
# Installation: Shade Pendant ØS1

## Step 6: Connect electrical wires



**A.** Install the mains cable in the black terminal by mounting the live wire in L, and neutral wire in N.

**B.** Lock the cable with the strain relief. Make sure it is gently tightened. Do not over tighten.

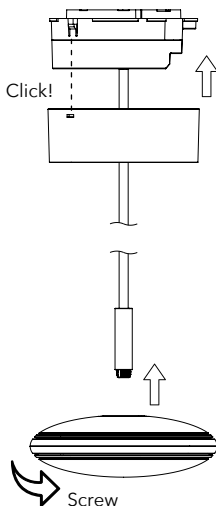


**A.** Cut and strip luminaire cable to appropriate length.

**B.** Connect the luminaire wires in the gray terminal.

**C.** Make sure the strain relieve is gently tightened without damaging the cable.

## Step 7: Closing the canopy and install the ØS1 Module



**A.** Install the canopy cover onto the power supply note alignment.

**B.** Install the ØS1 Module by screwing it onto the connector.

## Introduction: Shade Node

### Activate the Shade Node remote control

Before using gently pull the battery plastic foil out through the battery lid.



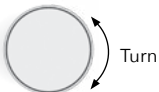
### Functions of the remote control:

Toggle on/off

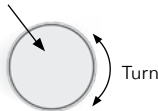
Change mood

Change intensity

Press & release



Press & hold



### Battery Replacement

To access the battery department, remove the lid and installed battery. Use a small screw driver to gently remove the lid if necessary.

Replace only with a CR 2032 type coin cell battery.



 **WARNING: CHOKING HAZARD**  
Small parts. Not for children under 3 years.

The Shade Node controls any Shade Pendant ØS1s available within its wireless range that has not been configured in the Better Light app on your smartphone.

To utilize the Shade Pendant ØS1 full potential with features such as creating groups to be controlled by one remote or programming specific mood into the rotation wheel please download our app and add your products as described on the following pages.

Further assistance can be found on our website:  
<https://shadelights.com/english-content/faq>



# Installation of App and products

## Step 1: Installing the Better Light App

Search for 'Better Light' on App Store or Google Play and install. It is important you have an Android smartphone with Bluetooth LE, or iPhone 5 or newer.



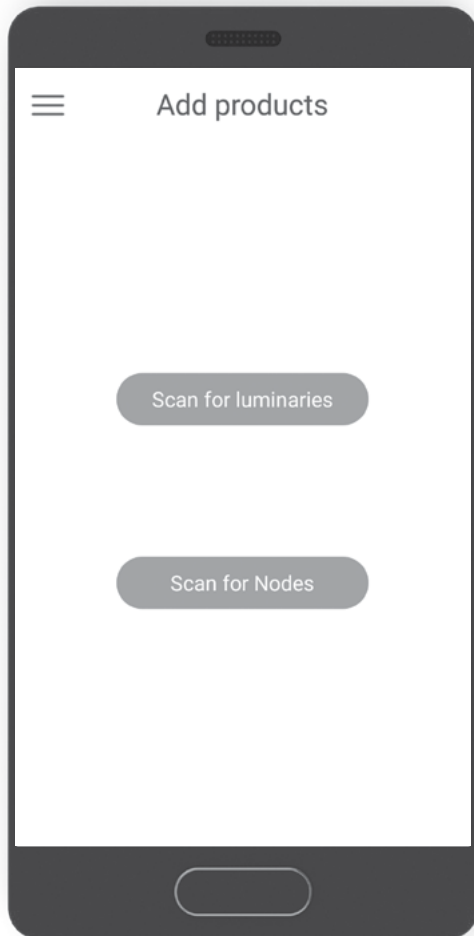
## Step 2: Add products to the App

Open the App, and add your Shade Pendant ØS1 by pressing 'Scan for luminaires'. Follow the directions in the App to connect your luminaire.

Add your Shade Node remote control by pressing 'Scan for Nodes'. Follow the directions in the App to connect your Shade Node.

For further instructions on how to use the App, please visit our website:  
<https://shadelights.com/english-content/faq>

**If you need further help please contact us at: [help@shade.one](mailto:help@shade.one)**



**Technical specifications:**

**Lumen output:**

Max. 1300

**CCT (Correlated Color Temperature):**

2700-5600K

**CRI (Color Rendering Index):**

Min. 95

**Input voltage:**

100-240 VAC 50/60 Hz

**Power consumption:**

Max. 20W

**CE**



**IP30**



“Light  
isn't just light”



# Reinventing light

Shade is a Danish design company using cutting edge technology to change and improve the way we interact with and control light, we call it Better Light - Better Living



[info@shadelights.com](mailto:info@shadelights.com) – [www.shadelights.com](http://www.shadelights.com)