

FLOS

POCHETTE UP/DOWN FL

| | |
|------------------------------|---|
| Mounting | Wall |
| Lamps description | 1 x 18W G24q-2 FSQ |
| Environment | Indoor |
| Finish | Chrome, Grey, Shiny white |
| Technical description | Wall lamp providing indirect or direct/indirect light. Pressure die-cast Zamak alloy structure. Molded steel, galvanized white wall attachment containing the wall attachment system as well as the electrical devices. |



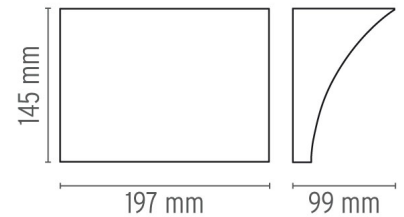
Pochette Up/Down FL

designed by Rodolfo Dordoni

Wall lamp providing indirect or direct/indirect light

| | |
|------------|-------------|
| ● F9703020 | Grey |
| ● F9703057 | Chrome |
| ● F9703009 | Shiny white |

DIMENSIONS

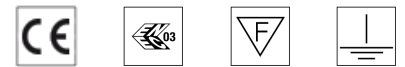


PHYSICAL

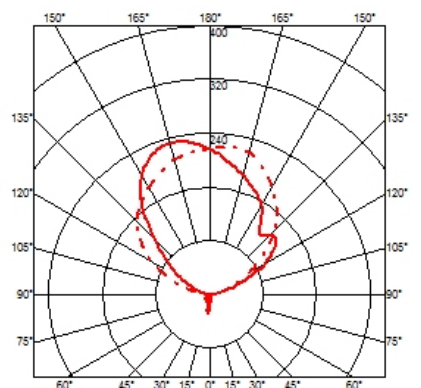
| | |
|------------------------------|----------------|
| Supply | Terminal block |
| Construction material | Zamak |
| Weight (kg) | 1.5 |



CERTIFICATIONS



| |
|----|
| IP |
| 20 |



Pochette Up/Down FL . Lamps



FSQ 18W G24q-2

Lamp wattage:

18 W

Lamp category:

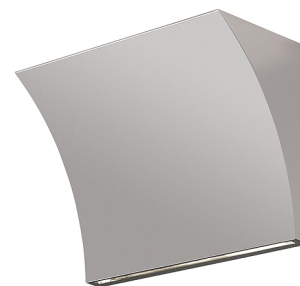
Compact fluorescent

Socket:

G24q-2

Lamp type:

FSQ



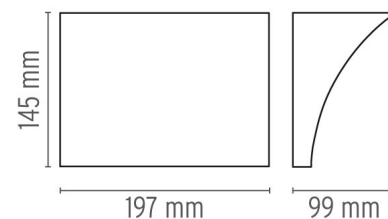
Pochette Up/Down FL

designed by Rodolfo Dordoni

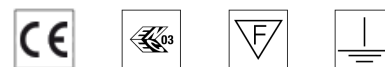
Wall lamp providing indirect or direct/indirect light

- F9703020 Grey
- F9703057 Chrome
- F9703009 Shiny white

DIMENSIONS



CERTIFICATIONS



| |
|----|
| IP |
| 20 |

