

FLOS

POCHETTE

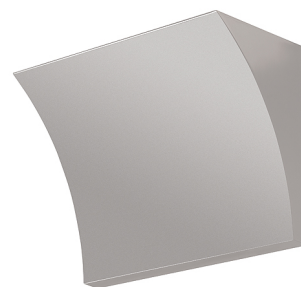
Mounting	Wall
Lamps description	1 x MAX 160W R7s HDG
Environment	Indoor
Finish	Chrome, Grey, Shiny white
Technical description	Wall lamp providing indirect light. Pressure die-cast Zamak alloy structure. Molded steel, galvanized white wall attachment containing the wall attachment system as well as the electrical devices. Pochette has a single dimmable light source in the traditional recessed series.

ELECTRICAL

Emergency	Without
Voltage (V)	230

PHYSICAL

Supply	Terminal block
Construction material	Zamak
Weight (kg)	1.6
Minimum distance from illuminated object (mm)	800



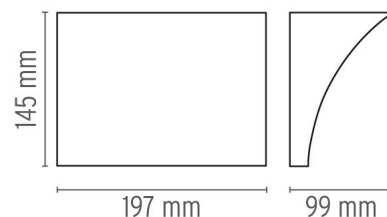
Pochette

designed by Rodolfo Dordoni

Wall lamp providing indirect light

● F9700020	Grey
● F9700057	Chrome
● F9700009	Shiny white

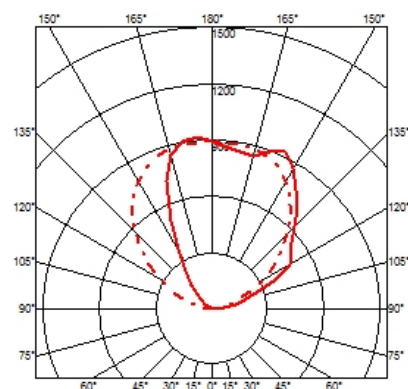
DIMENSIONS



CERTIFICATIONS



IP
20



Pochette . Lamps



HDG 160W R7s

Lamp wattage:

160 W

Lamp category:

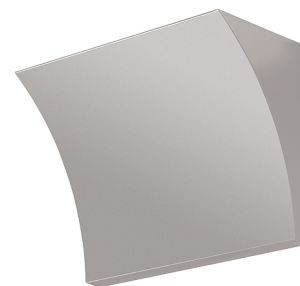
Halogen mains

Socket:

R7s

Lamp type:

HDG



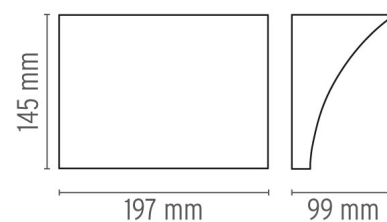
Pochette

designed by Rodolfo Dordoni

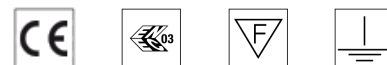
Wall lamp providing indirect light

- F9700020 Grey
- F9700057 Chrome
- F9700009 Shiny white

DIMENSIONS



CERTIFICATIONS



IP
20

