

Instructions

Flowerpot VP4 Verner Panton 1968



Congratulations with your new Flowerpot lamp, designed in 1968 by Verner Panton. We hope you will enjoy using this lamp and follow these instructions to ensure correct use. If you have any questions or comments, please do not hesitate to contact us by mail at:
info@andtradition.com

&Tradition®

Flowerpot VP4 Verner Panton 1968

Please read these instructions carefully and retain them for future reference to ensure that the product is used correctly. For your own safety, please study each step of this instruction manual first. &Tradition is not responsible for any faults or damages caused by not following these instructions correctly. Do not modify this product in any way.

Contents

- A Lamp
- B Bottom lamp shade

Tools needed

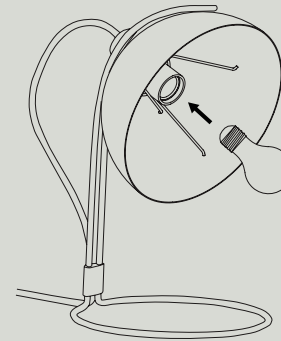
- Bulb type E27

Safety precautions

- Dispose of plastic bag from packaging and do not allow children to play with it.
- Keep product well out of children's reach.
- The lamp is only intended for interior use.
- Lamp exterior gets hot after prolonged use.
- Do not attempt installation of product if you are not competent to do so yourself.
- Consult a professionally qualified electrician if in any doubt.
- Do not place the cable in reach of small children or anywhere there is a risk of falling over it.
- If the external cable or cord of this lamp is damaged, it must be replaced by the manufacture or a similar qualified person in order to avoid a hazard.

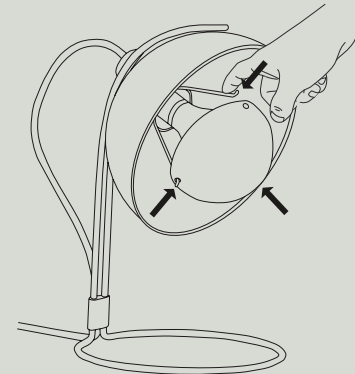
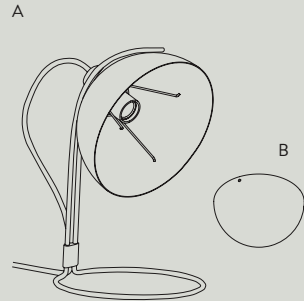
Cleaning instructions

- Wipe surface of lamp shade with a soft, damp sponge or cloth.
- Do not use any abrasive cleaning tools such as steel wool, scouring sponges or stiff brushes.
- Never use strong cleaning agents such as white spirit, turpentine, household glass cleaner or cellulose thinners.
- Only wipe the inside of the shade with a soft, damp cloth or feather duster.



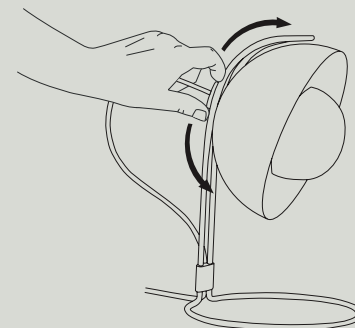
Step 1

Install the light bulb.



Step 2

Mount the bottom lamp shade onto the three pronged arm inside the shade.



Step 3

To adjust the angle of the light, grip the top of the shade while supporting the base with the other hand. Slide the top of the shade up or down to set the desired angle. It is best to set the angle before turning the lamp on, as the shade gets hot when the lamp is in use for longer periods of time.

For indoor use only
E27 maximum 40W
Bulb not included



